

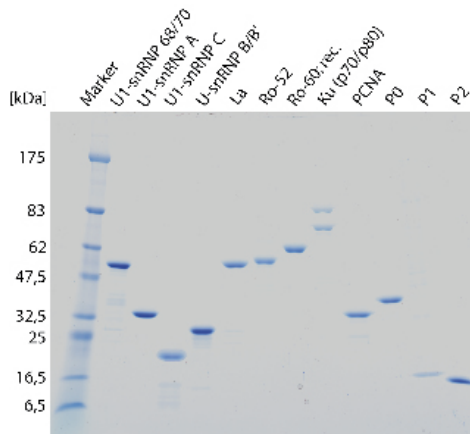
# Autoantibodies in Systemic Lupus Erythematosus

Systemic Lupus Erythematosus (SLE) is a chronic, inflammatory autoimmune connective tissue disease, which can affect virtually any part of the human body. SLE like other autoimmune diseases has a multifactorial etiology, implicating endogenous and exogenous factors.

Autoantibodies to double stranded DNA (dsDNA) are the serological feature of SLE and present in 70% of the patients. Also of high diagnostic value in SLE diagnosis is the proliferating cell nuclear antigen (PCNA) as one can expect very small interindividual variations.

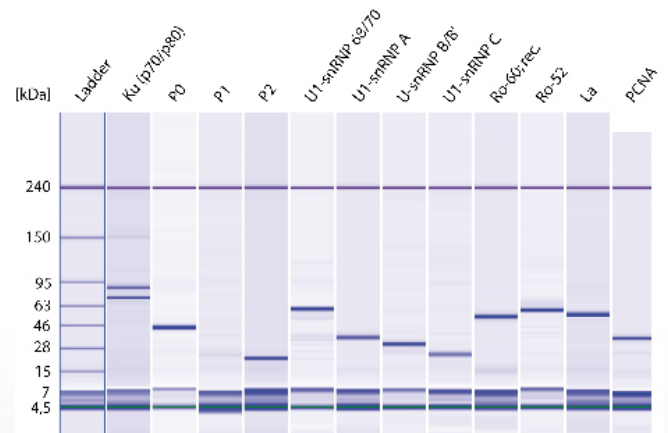
MCTD (95-100%), but they are also found in 30-40% of the SLE sera. Autoantibodies to ribonucleoproteins (ribosomal phosphoproteins P0, P1 and P2) are present in 10% of SLE patients. It has been reported that lupus patients positive for anti-ribosomal P autoantibodies have a high frequency of CNS involvement, suggesting a marker use for these antibodies. Ku antigen consists of two polypeptides (70 kDa and 80 kDa). Antibodies to Ku were originally reported in scleroderma/polymyositis overlap syndrome (up to 20% of patients), but have also been detectable in 5-10% of SLE and MCTD patients, and in up to 20% of patients with primary Sjögren's syndrome.

DIARECT's recombinant autoantigens are mainly produced in the baculovirus/Sf9 expression system. They all have a proven track record for quality and sensitivity.



*SLE associated recombinant antigens were separated on a SDS-PAGE gel and stained with Coomassie brilliant blue.*

Several autoantibodies are known to occur in different autoimmune diseases. Ro/SS-A and La/SS-B autoantibodies are important diagnostic markers for SLE with Sjögren's Syndrome (SS), SCLÉ and also Neonatal LE. High antibody titers to U1-snRNP specific targets (68/70 kDa, protein A and protein C antigens) are a hallmark for



*Electrophoretic analyses of SLE-associated recombinant antigens showing the superior quality of DIARECT's products.*

## Ordering Information

12300/12301	dsDNA	0.1 mg/1.0 mg
12700/12701	Ro/SS-A (52 kDa)	0.1 mg/1.0 mg
12800/12801	La/SS-B	0.1 mg/1.0 mg
13000/13001	U1-snRNP 68/70 kDa	0.1 mg/1.0 mg
13100/13101	U1-snRNP A	0.1 mg/1.0 mg
13200/13201	U1-snRNP C	0.1 mg/1.0 mg
13300/13301	U-snRNP B/B'	0.1 mg/1.0 mg
14100/14401	Ribosomal Phosphoprotein P0	0.1 mg/1.0 mg
14200/14201	Ribosomal Phosphoprotein P1	0.1 mg/1.0 mg
14300/14301	Ribosomal Phosphoprotein P2	0.1 mg/1.0 mg
15400/15401	Proliferating Cell Nuclear Antigen (PCNA)	0.1 mg/1.0 mg
17300/17301	Ku (p70/p80)	0.1 mg/1.0 mg
17400/17401	Ro/SS-A (60 kDa; recombinant)	0.1 mg/1.0 mg

In some countries the use of certain recombinant antigens in diagnostic tests may be protected by patents. DIARECT is not responsible for the determination of these issues and suggests clarification prior to use.



DIARECT AG • DIagnostics by RECombinant Technology • Bötzing Str. 29 B • 79111 Freiburg • Germany  
Tel.: +49 (0)761-479790 • Fax: +49 (0)761-4797929 • e-mail: [orders@diarect.com](mailto:orders@diarect.com) • [www.diarect.com](http://www.diarect.com)